



Chalo South America

BRAZIL PANTANAL

IN SEARCH OF SOUTH
AMERICA'S BIG 5

OCTOBER 15 - 31, 2025



WWW.CHALOAFRICA.COM | +1 703 220 6393 | HELLO@CHALOAFRICAINC.COM

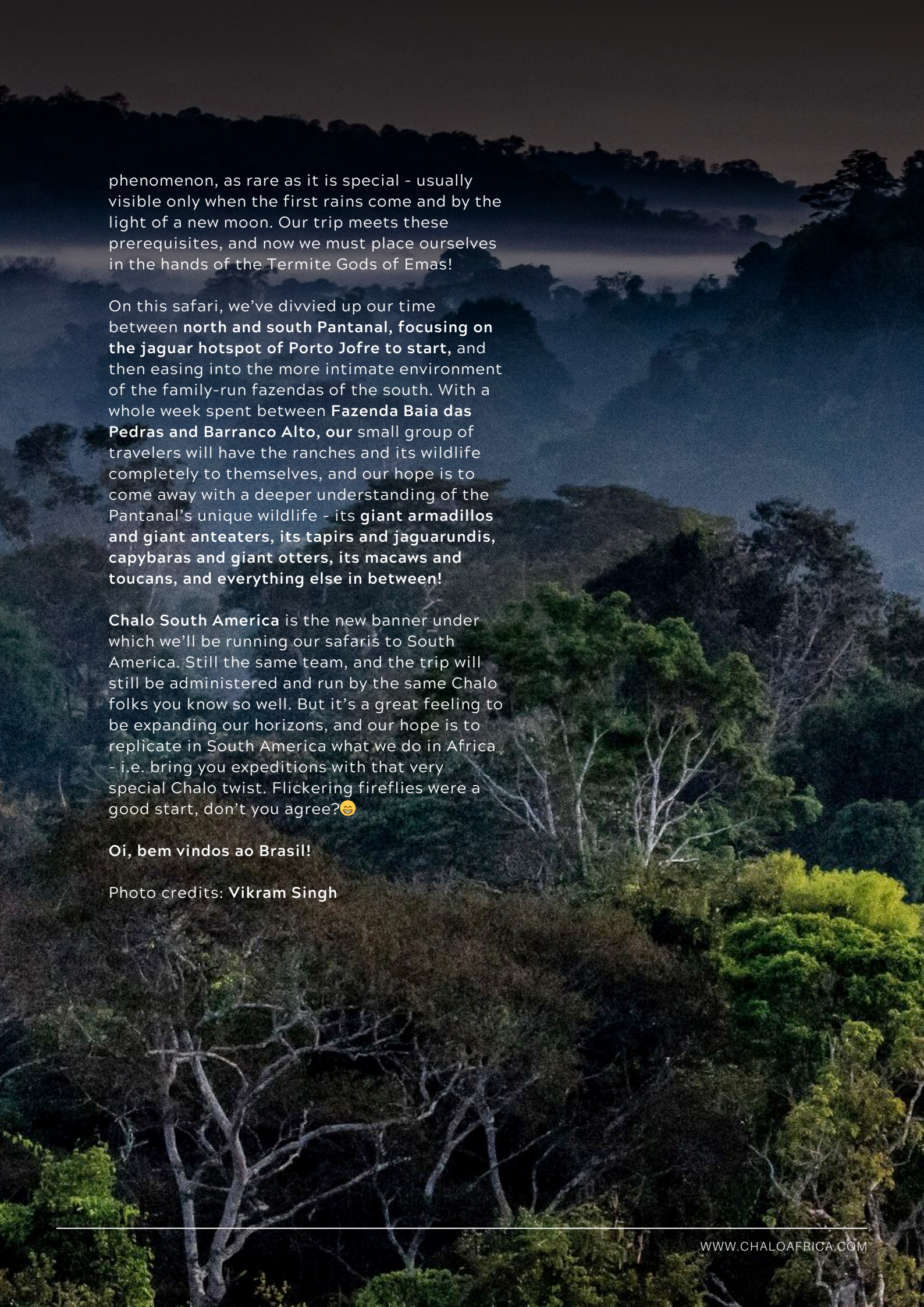
BRAZIL

BY THE LIGHT OF A NEW MOON

One of the simple pleasures of planning this trip has been simply rolling these wonderful new sounds around on my tongue - **jaguar, tapir, capybara, rhea, jabiru, jaguarundi, tamandua...** for those of us who are intimately familiar with African wildlife, this is like treading into a whole new world that is awash with new sounds, new smells & new sights - a world where our safari senses are being reborn and reshaped in brand new ways.

The **Pantanal biome** is a UNESCO World Heritage site. It is the largest wetland on our planet, covering an area of around 140.00 km² in **western Brazil**. It is home to dozens of species of mammals, including the iconic **jaguar** that shares its riverine habitat with **noisy giant otters**. **Howler monkeys** and **coatis** live alongside birds of all colours and shapes. In places where water accumulates, **caimans** sunbathe side by side, feeding on **piranhas** and **pacus**. The Pantanal hosts an abundance of life and its biodiversity is staggering.

Our other park on this trip is yet another **UNESCO World Heritage site**. **Emas National Park** is home to waterfalls, mountains, **maned wolves, rhea, tapirs, pampas cats and toucans, even the occasional jaguar**. But our target here is something else altogether (well, in addition to the **maned wolves!**) - this trip has been timed to coincide with the **glowing termite mounds** of Emas, lit up like Christmas trees from the bioluminescent green light emitted by the larvae of the *phyrophorus nyctophanus* beetle. Terrestrial bioluminescence is an astonishing



phenomenon, as rare as it is special - usually visible only when the first rains come and by the light of a new moon. Our trip meets these prerequisites, and now we must place ourselves in the hands of the Termite Gods of Emas!

On this safari, we've divvied up our time between **north and south Pantanal, focusing on the jaguar hotspot of Porto Jofre to start**, and then easing into the more intimate environment of the family-run fazendas of the south. With a whole week spent between **Fazenda Baia das Pedras and Barranco Alto**, our small group of travelers will have the ranches and its wildlife completely to themselves, and our hope is to come away with a deeper understanding of the Pantanal's unique wildlife - its **giant armadillos and giant anteaters, its tapirs and jaguarundis, capybaras and giant otters, its macaws and toucans, and everything else in between!**

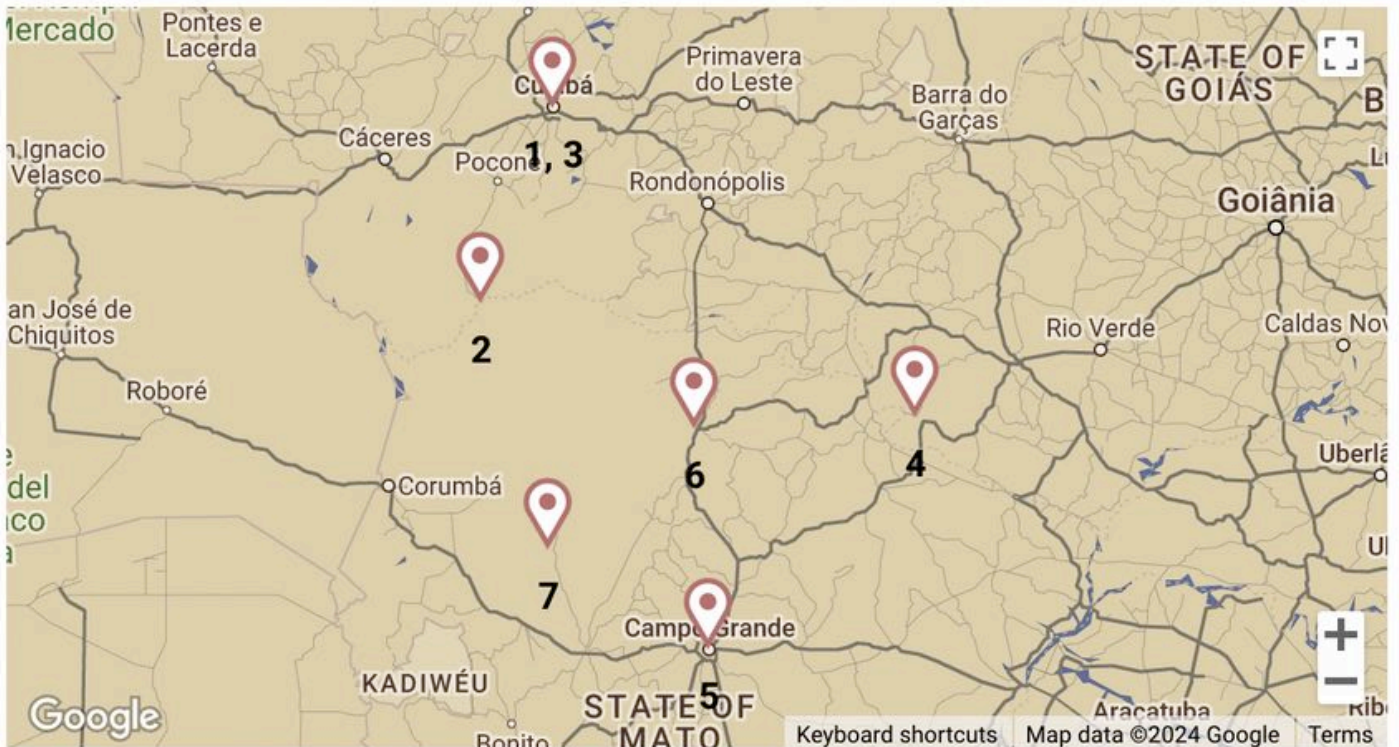
Chalo South America is the new banner under which we'll be running our safaris to South America. Still the same team, and the trip will still be administered and run by the same Chalo folks you know so well. But it's a great feeling to be expanding our horizons, and our hope is to replicate in South America what we do in Africa - i.e. bring you expeditions with that very special Chalo twist. Flickering fireflies were a good start, don't you agree? 😊

Oi, bem vindos ao Brasil!

Photo credits: **Vikram Singh**

ITINERARY OVERVIEW

OCTOBER 15 - 31, 2025



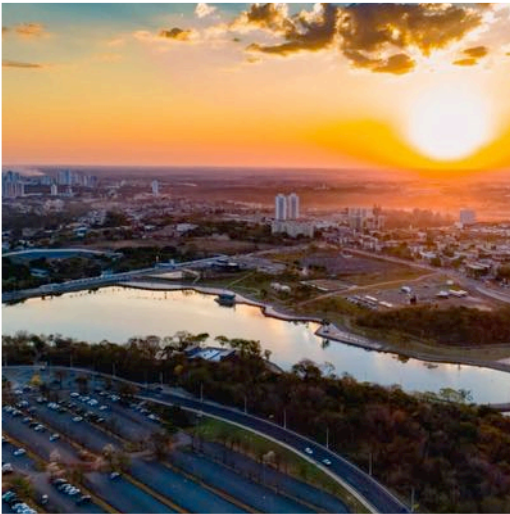
Key Dates

- 1)** October 15 - 16: Hotel Deville Prime Cuiaba, Cuiabá
- 2)** October 16 - 19: Hotel Pantanal Norte, Porto Joffre
- 3)** October 19 - 20: Hotel Deville Prime Cuiaba, Cuiabá
- 4)** October 20 - 23: Pousado Do Gloria, Cerrado Grasslands
- 5)** October 23 - 24: Grand Park Hotel, Cerrado Grasslands
- 6)** October 24 - 27: Fazenda Baia Das Pedras, South Pantanal
- 7)** October 27 - 31: Fazenda Barranco Alto , South Pantanal

DAY BY DAY ITINERARY

DAY 1

WEDNESDAY · OCTOBER 15, 2025



Welcome to Brazil!

Arrival at Cuiabá Airport, where you'll be welcomed by your driver. Transfer to Hotel Deville Cuiabá. Overnight.

A charming hotel offering authentic Brazilian hospitality in the heart of Cuiabá, Hotel Deville Prime Cuiabá is located 25 minutes from the international airport of Várzea Grand and offers quick access to all the commercial, cultural and tourist attractions of the capital of Mato Grosso.

Note: Meals on own account at all city hotels.



Transfer to Hotel Deville Prime Cuiabá

- Depart Cuiabá Airport
- Arrive Hotel Deville Prime Cuiabá



Check in at Hotel Deville Prime Cuiabá

1 Night

DAY BY DAY ITINERARY

DAY 2

THURSDAY · OCTOBER 16, 2025

16 Oct: Cuiaba - Hotel Pantanal Norte (250 km/5,5 hrs)

After an early breakfast pick-up from your hotel, you will be transferred to Hotel Pantanal Norte. From Cuiabá to Poconé the transfer will be about 2 hours (100 km) on a paved road plus 4 hours on the Transpantaneira dirt road to Porto Jofre (150 km).

The trip on the Transpantaneira is a photographic safari with the possibility of observing herons, egrets, ibis, parrots, parakeets, and macaws, caiman, capybaras, and possibly other wildlife such as crab-eating raccoon, fox, coati, and rheas. You will arrive at the Hotel Pantanal Norte late afternoon, in time for lunch. In the afternoon, we'll head out on a first scouting trip by boat to search for jaguars, giant otters and other wildlife that live in and around the river. (B,L,D)

Situated on the very edge of the pristine Pantanal wetlands in Porto Jofre, Hotel Pantanal Norte is arguably the best launching pad for jaguar sightings in the Pantanal, and the reason we are spending 3 nights here.

Accommodations at Hotel Pantanal Norte offer both comfort and tranquility and feature panoramic views of the surrounding wetlands. The rooms blend modern amenities with a touch of regional charm and provide a cozy retreat. There is a swimming pool and an open-air restaurant that serves delectable Brazilian cuisine.



Check out from Hotel Deville Prime Cuiaba



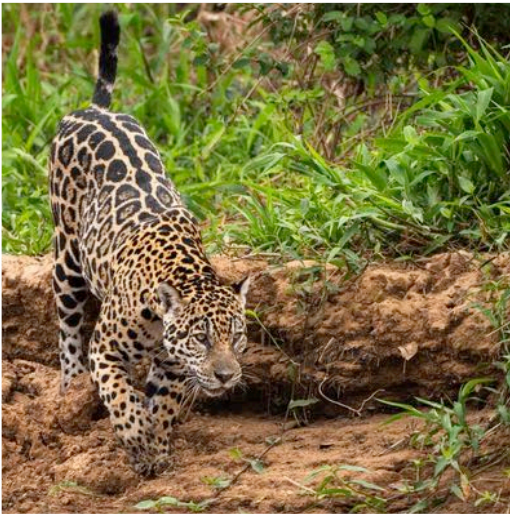
Check in at Hotel Pantanal Norte

3 Nights

DAY BY DAY ITINERARY

DAY 3 & 4

FRIDAY · OCTOBER 17, 2025 - SATURDAY · OCTOBER 18, 2025



17 & 18 Oct: Hotel Pantanal Norte Morning and afternoon will be spent on the river.

Boat trips provide an excellent opportunity to see jaguars and giant river otters up-close. This is often a highlight of visitors' trips to Brazil. In the dry season, we frequently see jaguars on the exposed beaches of the rivers - a once-in-a-lifetime experience! Other wildlife commonly seen on the river are capybara and caiman. Birds frequently encountered include kingfishers, egrets, storks, herons, and terns.

At the end of the afternoon, we will return to the lodge. Overnight. (B,L,D)

DAY BY DAY ITINERARY

DAY 5

SUNDAY · OCTOBER 19, 2025



After breakfast, there will be a last morning boat excursion followed by lunch.

In the early afternoon transfer back to Cuiaba, where you will check-in into the Hotel Deville Cuiaba. Overnight. (B,L)



Check out from Hotel Pantanal Norte



Transfer to Hotel Deville Prime Cuiaba

- Depart Hotel Pantanal Norte
- Arrive Hotel Deville Prime Cuiaba



Check in at Hotel Deville Prime Cuiaba

1 Night

DAY BY DAY ITINERARY

DAY 6

MONDAY · OCTOBER 20, 2025



After breakfast, transfer to Emas NP, a drive that will take the whole day. Arrival in the late afternoon followed by check-in at Pousada do Gloria. Dinner and overnight. (B,D)

Emas National Park is located in the heart of the Brazilian Cerrado grasslands with scattered wooded areas and never ending termite mounds. This unique landscape is home to giant Anteaters and Brazilian Tapirs, as well as the lanky Maned Wolf! Rarer, but possible, are the Pampas Cat and the Puma. Among birds, we'll look for Blue-and-Yellow Macaw, Greater Rhea, Bare-faced Curassow, White Woodpeckers, Streamer-tailed Tyrants and many more.



Check out from Hotel Deville Prime Cuiaba



Transfer to Pousada do Gloria

○ Depart Hotel Deville Prime Cuiaba

○ Arrive Pousada do Gloria

Cuiaba – Emas NP (562 km/9 hrs)



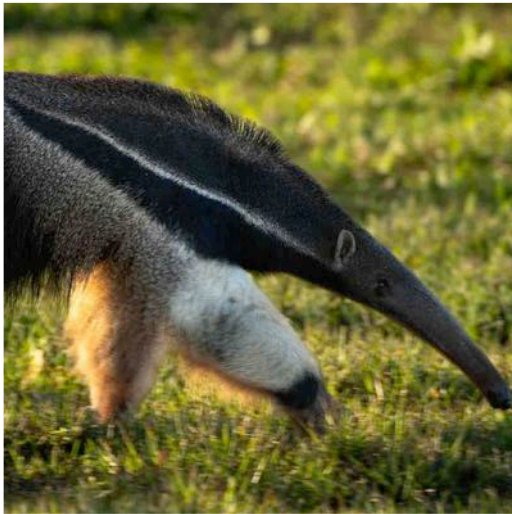
Check in at Pousado Do Gloria

3 Nights

DAY BY DAY ITINERARY

DAY 7 & 8

TUESDAY · OCTOBER 21, 2025 - WEDNESDAY · OCTOBER 22, 2025



21 & 22 Oct: Emas NP

Morning and afternoon safari drives into Emas NP in search of maned wolves, giant anteaters and other wildlife frequently spotted in this habitat. If conditions permit, we will observe the bioluminescence phenomenon at night. Dinner and overnight. (B,L,D)

DAY 9

THURSDAY · OCTOBER 23, 2025

After breakfast, we'll go on our last morning safari drive and lunch. In the early afternoon we will continue our journey to Campo Grande. Arrival and overnight at the Grand Park Hotel. (B,L)



Check out from Pousado Do Gloria



Transfer to Grand Park Hotel

- Depart Pousada do Gloria
- Arrive Grand Park Hotel

Emas NP – Campo Grande (367 km/5,5 hrs)



Check in at Grand Park Hotel

1 Night

DAY BY DAY ITINERARY

DAY 10

FRIDAY · OCTOBER 24, 2025

After breakfast transfer to Fazenda Baia das Pedras, 300 km from Campo Grande. The first 175 km will be on paved roads and the last 135 km entering the Pantanal will be on bumpy dirt roads. Along the way, chances of seeing lots of wildlife are high, and we hope to see marsh and pampas deer, capybara, caimans, howler monkeys, tapirs, peccaries, toucans, jabiru stork, the hyacinth, yellow and red macaws and a hundred other birds.

Arrival at the lodge in the late afternoon/evening followed by check-in. During your stay, the following activities will be offered at the pousada; horse riding, trekking, canoe rides and photo safari in the surrounding nature. During your stay all meals and excursions are included.

The Fazenda is located on the shores of Vazante do Castelo (draining field), in the Pantanal of Nhecolândia. Warm hospitality and the pantaneira cuisine are still a tradition at the Fazenda where the visitors can also visit the cattle ranching operations and get to know a little more about the culture of the Pantaneiros.

Overnight at Hotel Fazenda Baia das Pedras. (B,L,D)



Check out from Grand Park Hotel



Transfer to Fazenda Baia das Pedras

○ Depart Grand Park Hotel

○ Arrive Fazenda Baia das Pedras

Campo Grande - Fazenda Baia das Pedras (310 km/5 hrs)



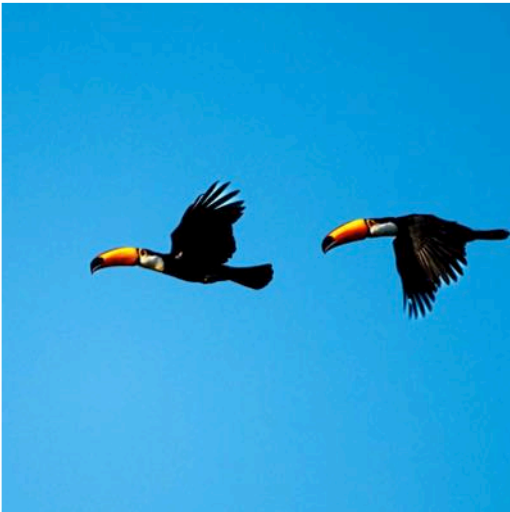
Check in at Fazenda Baia Das Pedras

3 Nights

DAY BY DAY ITINERARY

DAY 11 & 12

SATURDAY · OCTOBER 25, 2025 - SUNDAY · OCTOBER 26, 2025



The activities mentioned above are all on offer at the pousada. The trips will be carefully selected, depending on the climate and time of the year and you will be guided by local guides who know all about the flora and fauna that make this place unique.

To avoid the intense heat during the day, the activities take place early in the morning and mid-afternoon, at these times of the day, the possibilities of seeing the movement of the animals are a lot higher.

During your stay all excursions and meals are included.

**Overnight at Hotel Fazenda Baia das Pedras.
(B,L,D)**

DAY BY DAY ITINERARY

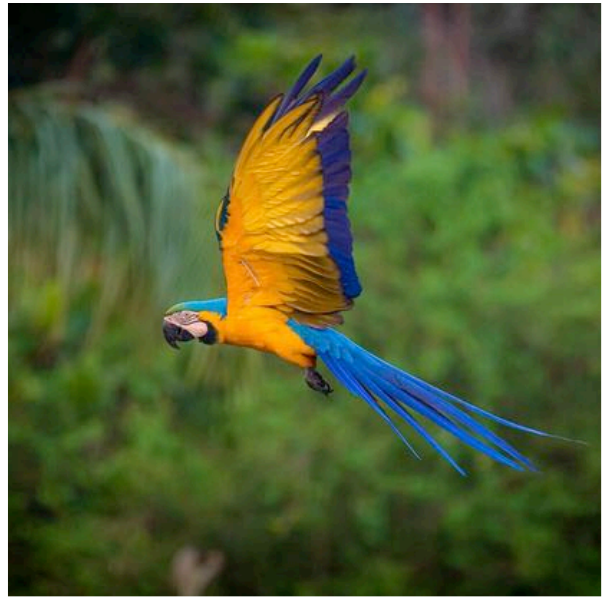
DAY 13

MONDAY · OCTOBER 27, 2025

After breakfast ground transfer (80 km) in 4x4 to Fazenda Barranco Alto, with underway stops for photo shooting and appreciating wildlife. Arrival at Fazenda Barranco Alto followed by the check-in.

The program will be adapted to suit the particular desires of each guest. Some of the possible activities are photosafaris, exploring the loops & meanders of the rio Negro by silent boats and kayaks, day and night walks, horseriding, boating and hiking, animal spotting by night with searchlights, river exploration and swimming.

Dinner and overnight at Fazenda Barranco Alto. (B,L,D)



Check out from Fazenda Baia Das Pedras



Transfer to Fazenda Barranco Alto

○ Depart Fazenda Baia das Pedras

○ Arrive Fazenda Barranco Alto

Fazenda Baia das Pedras - Fazenda Barranco Alto (80 km/2 hrs)



Check in at Fazenda Barranco Alto

4 Nights

DAY BY DAY ITINERARY

DAY 14 - 17

TUESDAY · OCTOBER 28, 2025 - FRIDAY · OCTOBER 31, 2025



After breakfast air transfer back to Campo Grande Airport.

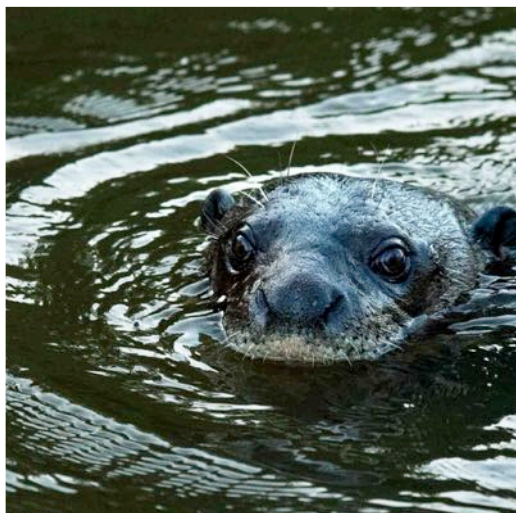
Flying low at only 600 feet over the wetlands will give you a good overview of the landscape: forested islands, lagoons, lakes, oxbows, channels and the scattered ranch steads built on the highest grounds to avoid the annual flooding. From the airplane one can spot marsh deer, capybaras, peccaries and bigger flocks of birds.

Arrival at the airport of Campo Grande in time for your domestic flight out. (B)

DAY BY DAY ITINERARY

DAY 17

FRIDAY · OCTOBER 31, 2025



Check out from Fazenda Barranco Alto



Flight from Barranco Alto to Campo Grande International Airport

- Depart Barranco Alto
- Arrive Campo Grande International Airport

NOTES AND INCLUSIONS

NOTES

- The internal flights are not direct flights and will most likely have stops at other airstrips enroute. There may be changes to arrival and departure times. A maximum baggage allowance of 15kgs per person (including hand baggage) will be strictly enforced for the safety of other passengers on all shared charters.
- Do ensure that you have checked passport validity and the visa and vaccination requirements for the countries you are travelling to.
- Internet and phone coverage is not guaranteed.
- Domestic flights are subject to availability

THIS COST INCLUDES:

- Overnights in rooms with private bathroom and air conditioning;
- Ground transfers as mentioned in the program;
- Private air transfer Barranco Alto - Campo Grande;
- Meals as mentioned in itinerary (B=breakfast / L=lunch / D=dinner, excl. drinks*);
- Excursions as mentioned in itinerary;
- English speaking guide during the excursions mentioned;

- **During the boat excursions in the North Pantanal bottled water is included and during your stay at Fazenda Barranco Alto & Fazenda Baia Pedras filtered water, soft drinks and beer are included.**

EXCLUSIONS AND T&C

THIS COST DOES NOT INCLUDE:

- Does NOT include international flights to Brazil, as well as internal flights from Sao Paulo to Cuiaba & Campo Grande to Sao Paulo
- Visa fees, vaccinations, medical and travel insurance;
- Any accommodation, activities, domestic flights, transfers or meals not mentioned above; (the domestic flights, marked in Blue in the itinerary above, are included in the cost.
- Shopping and other items of a personal nature;
- Porterage, tipping and gratuity to camp guide and staff;

TERMS & CONDITIONS

The price quoted may change without notice due to any revision in prices brought about by the suppliers, revision in fuel prices or government levies/duties.

It is deemed our detailed Terms and Conditions applicable have been read, understood and agreed upon. A copy of the same can be requested by email or viewed on our website at <https://www.chaloafrica.com/docs/terms-and-conditions.pdf>



Chalo Africa ^{INC}

www.ChaloAfrica.com